

TOWN HWY. No.	LENGTH IN MILES CLASS 3	LENGTH IN MILES CLASS 4	TOWN HWY. No.	LENGTH IN MILES CLASS 3	LENGTH IN MILES CLASS 4	TOWN HWY. No.	LENGTH IN MILES CLASS 3	LENGTH IN MILES CLASS 4
9	2.05		57	1.65		107	0.20	
10	0.10		58	0.10		108	0.44	
11	1.81	(0.03)	59	1.41		109	0.02	
12	0.10		60	0.30		110	0.11	
13	0.65		61	0.08	(0.25)	111	0.18	
14	3.68		62	0.09		112	0.26	(0.17)
15	0.40	(0.25)	63	0.19		113	0.06	
16	1.78		64	0.10		114	0.21	
17	0.22		65	0.35		115	0.74	
18	0.22		66	0.18		116	0.16	
19	1.28		67	0.09		117	0.09	
20	0.04	(0.46)	68	1.58		118	0.10	
21	1.04		69	0.70		119	0.10	
22	0.11		70		(0.34)	120	0.09	
23	1.17	(0.12)	71		(0.12)	121	0.07	
24	2.14	(0.41)	72		(0.27)	124	0.06	
25	0.33		73	0.20		125	0.06	
26	0.96		74	0.28		126	0.03	
27	0.34		75	0.29		127	0.07	
28	0.58		76	0.86		129	0.10	
29	0.30	(0.20)	77	0.20		130	0.24	
30	1.45		78	0.85		131	0.08	
31	1.64		79	0.49		132	0.06	
32	1.40		80		(0.07)	133	0.15	
33	0.17		81	0.05		134	0.20	
34	0.35		82	0.10		135	0.09	
37	0.55		83	0.07		136	0.12	
38	0.83	(0.19)	85	0.23		137	0.26	
39	0.83		87	0.10		138	0.05	
40	1.77		90	0.05		139	0.05	
41	0.32		91	0.10		140	0.05	
42	0.25		92	0.90		141	0.76	
43	0.75	(0.13)	93	0.27		142	0.11	
44	0.30	(1.70)	94	0.56		143	0.11	
45	1.49		95	0.09		144	0.15	
46	1.84	(0.71)	96	0.15		145	0.51	
47	0.04		97	0.20		146	0.20	
48	0.89	(0.94)	98	0.38		147	0.31	
49	1.05		99	0.26		149	0.14	(0.24)
50	0.64	(0.23)	100	0.16		150	0.10	(0.33)
51	0.55		101	0.19		151		
52	0.35		102	0.18		152	0.19	
53	0.13	(0.11)	103	0.19		153	0.25	
54	0.94	(0.36)	104	0.07		154	0.29	
55	0.45		105	0.17		155	0.17	
56	0.19	(0.61)	106	0.12		156	0.17	
TOTAL							59.65	8.81

LEGAL TRAIL No.	LENGTH IN MILES LEGAL TRAIL	TOTAL	
1	(0.20)	0.20	
TOTAL			0.20

CLASS	TOTAL CLASS	TOTAL TOWN	
CLASS 1	0.689	0.689	
CLASS 2	4.050	4.050	
CLASS 3	0.600	0.600	
CLASS 4	2.980	2.980	
LEGAL TRAIL	1.050	1.050	
TH-1	2.060	2.060	
TH-2	1.420	1.420	
TH-3	2.960	2.960	
TOTAL CLASS 2			19.390
TOTAL CLASS 3			59.65
TOTAL TOWN			79.729

STATE HIGHWAY	TOTAL STATE HIGHWAY	
VT-114	4.030	
VT-122	4.353	
TOTAL STATE HIGHWAY		8.383
TOTAL STATE HIGHWAY - Ramps		0.085
TOTAL STATE HIGHWAY - Ramps		0.085
US HIGHWAY		5.565
US-5		5.565
TOTAL STATE		14.033
INTERSTATE		6.846
I-91		6.846
INTERSTATE - Ramps		2.144
I-91		2.144
TOTAL INTERSTATE - Ramps		2.144
TOTAL INTERSTATE		8.990

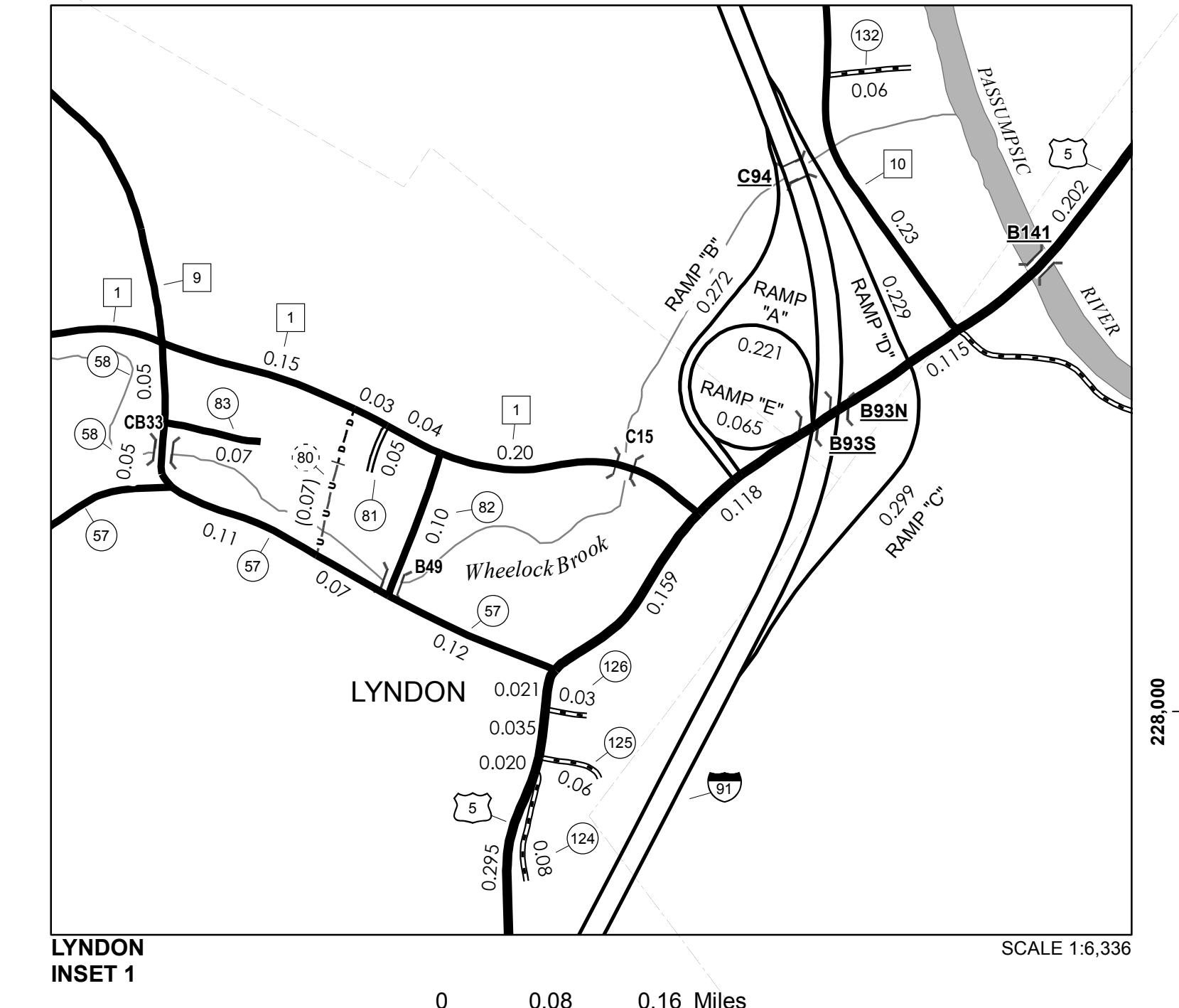
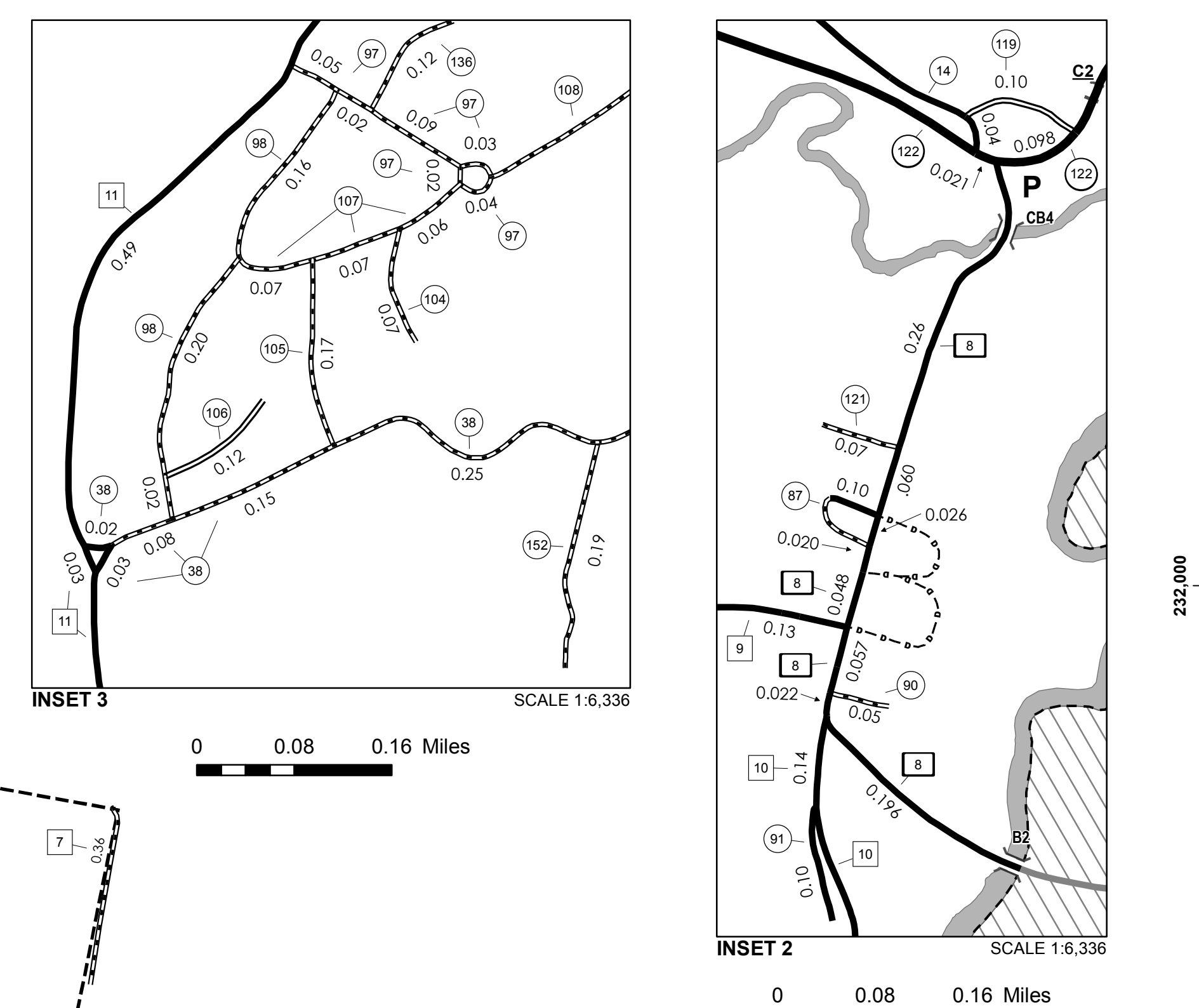
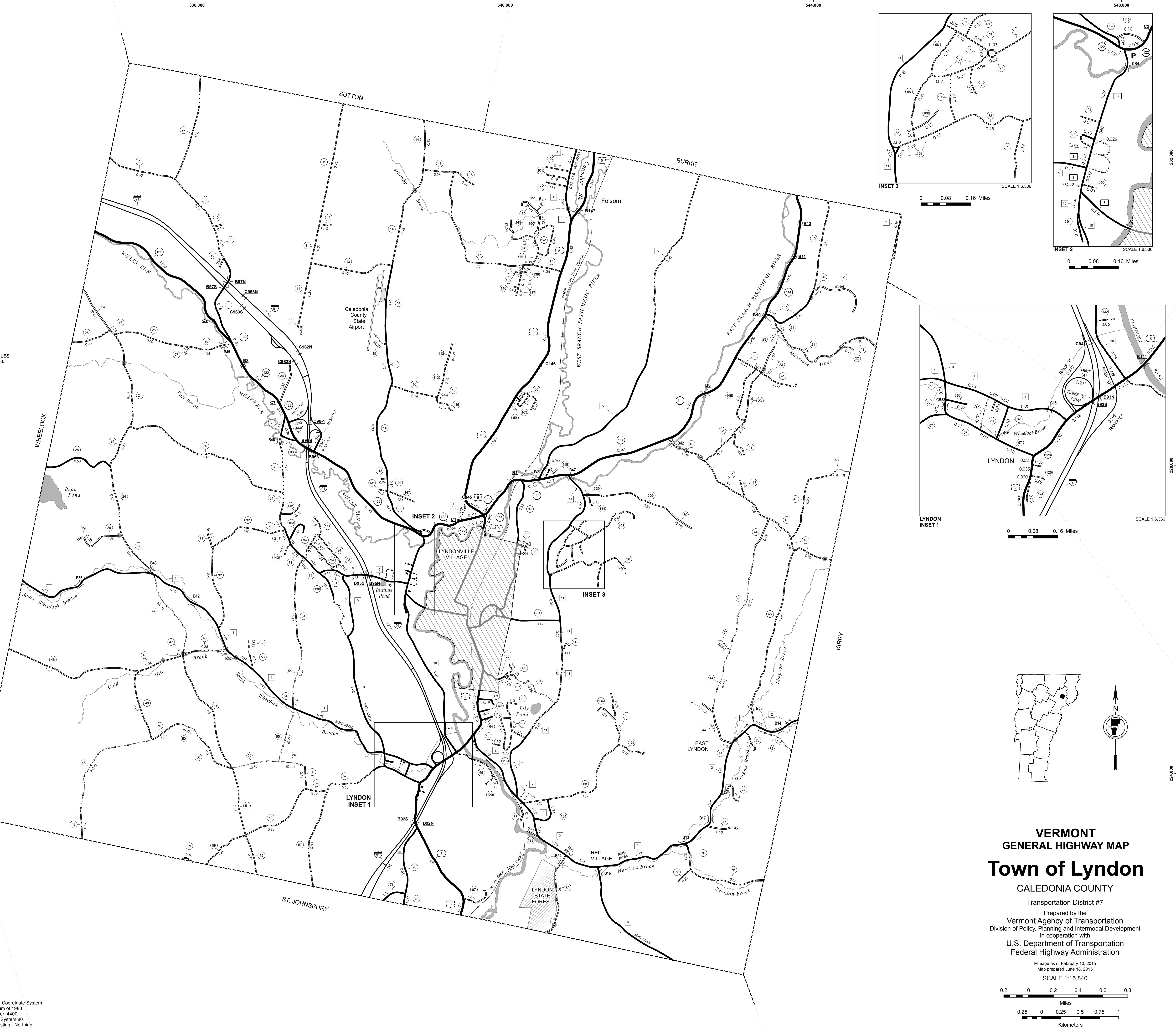
TOTAL, TRAVELED HIGHWAYS, FEB. 10, 2015: 102,752
(Excludes Class 4, Legal Trail, and Undeveloped Corridor Mileage)

- HIGHWAYS**
- INTERSTATE
 - U.S. ROUTE
 - STATE ROUTE
 - CLASS 1
 - CLASS 2
 - CLASS 3
 - CLASS 4
 - LEGAL TRAIL
 - GRAVEL
 - SOIL OR GRADED AND DRAINED EARTH
 - UNIMPROVED OR PRIMITIVE
 - IMPASSABLE OR UNTRAVELED
 - LEGAL TRAIL
 - DISCONTINUED
 - HIGHWAY CLASS CHANGE
 - RAILROAD
 - INACTIVE RAILROAD
 - PUBLIC LAND - GREEN MOUNTAIN NATIONAL FOREST
 - PUBLIC LAND - STATE/MUNICIPAL
- POLITICAL SUBDIVISIONS**
- STATE BOUNDARY
 - COUNTY BOUNDARY
 - TOWN BOUNDARY
 - VILLAGE BOUNDARY
 - URBAN COMPACT BOUNDARY
 - WATER BODY
 - STREAM OR BROOK
- BRIDGE OR CULVERT**
- BRIDGE OR CULVERT > 20'
 - BRIDGE OR CULVERT 6' - 20'
 - VOBCIT BRIDGE
 - VOBCIT CULVERT > 6'
 - STATE BRIDGE OR CULVERT IDENTIFIER
 - TOWN BRIDGE OR CULVERT IDENTIFIER
 - NFR NATIONAL FOREST ROAD
 - SEH STATE FOREST HIGHWAY
 - P PARK AND RIDE
- FEDERAL CLASSIFICATION IDENTIFIER**
- FAU URBAN ARTERIAL OR COLLECTOR
 - MA MINOR ARTERIAL
 - MJC MAJOR COLLECTOR
 - MNC MINOR COLLECTOR
 - PA PRINCIPAL ARTERIAL

DISCLAIMER:
The untraveled highways (laid-out town highways), discontinued highways, and legal trails hereon are those of which the Agency of Transportation has record; others may exist.

Highway and bridge data by the Agency of Transportation. Town short structures are drawn from the Vermont Online Bridge & Culvert Inventory Tool (VOBCIT) database. All other data from the Vermont Center for Geographic Information. Only named streams are shown.

Vermont State Plane Coordinate System
North American Datum of 1983
SPCS Zone Identifier 4400
Geodetic Reference System 80
4,000-meter grid, Easting - Northing



VERMONT
GENERAL HIGHWAY MAP
Town of Lyndon
CALEDONIA COUNTY
Transportation District #7
Prepared by the
Vermont Agency of Transportation
Division of Policy, Planning and Intermodal Development
in cooperation with
U.S. Department of Transportation
Federal Highway Administration
Mileage as of February 10, 2015
Map prepared June 18, 2015
SCALE 1:15,840
0.2 0 0.2 0.4 0.6 0.8
Miles
0 0.25 0.5 0.75 1
Kilometers